



Sonatype Nexus Demo

Code smarter. Fix faster. Be secure.

Automate software supply chain management to accelerate developer innovation.

Vic • Linktech Inc • @ Live DEMO 2023

OUTLINE

- Sonatype Nexus Overview
- Nexus Feature
- Nexus integration with CI/CD
- 實機展示
- Nexus version compare
- Linktech Support
- Q&A



Nexus Overview



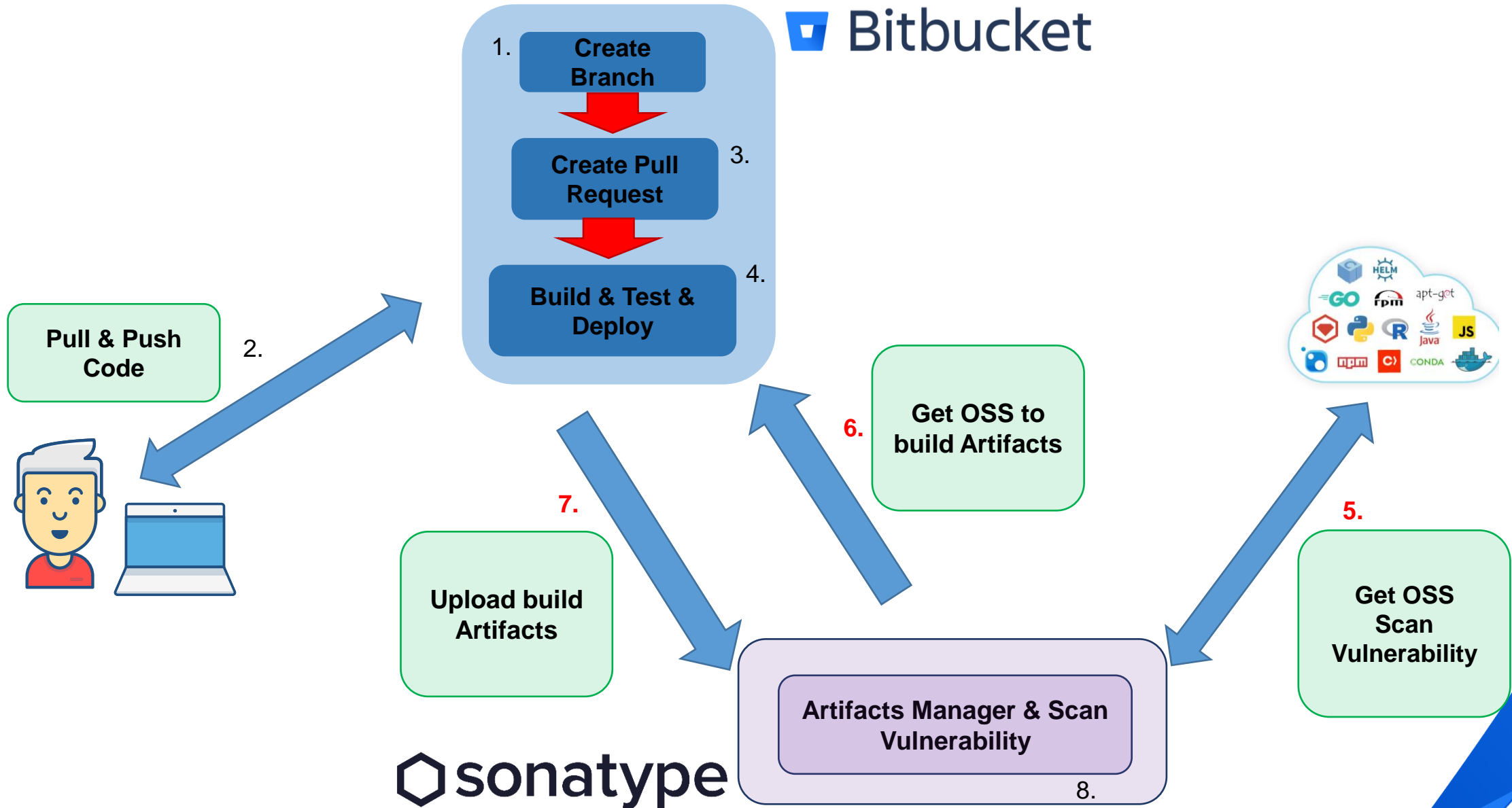


What is Nexus?

Nexus is a **repository manager**. It allows you to proxy, collect, and manage your dependencies so that you are not constantly juggling a collection of JARs.

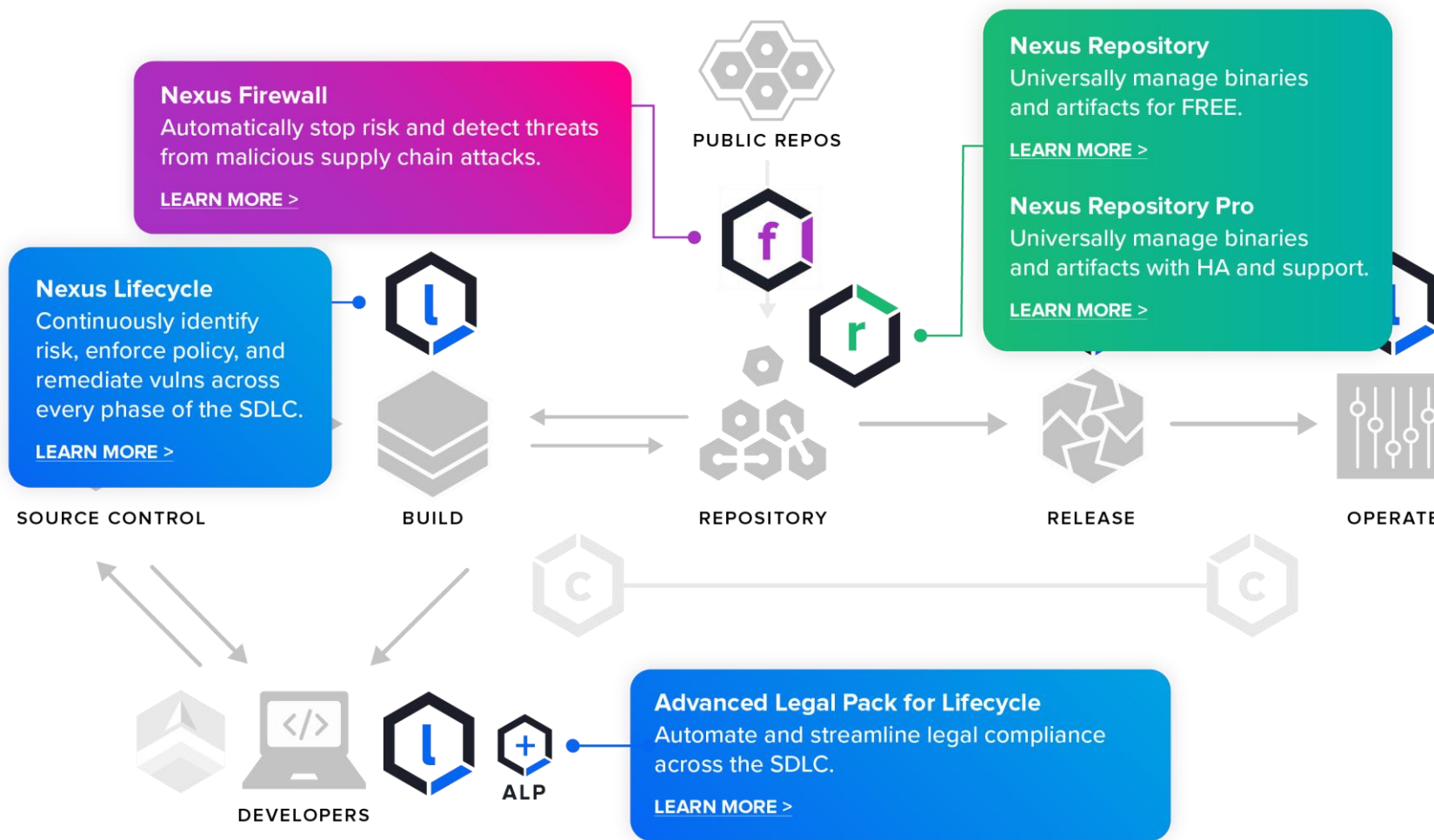
It makes it easy to distribute your software. Internally, you configure your build to publish artifacts to Nexus and they then become available to other developers.





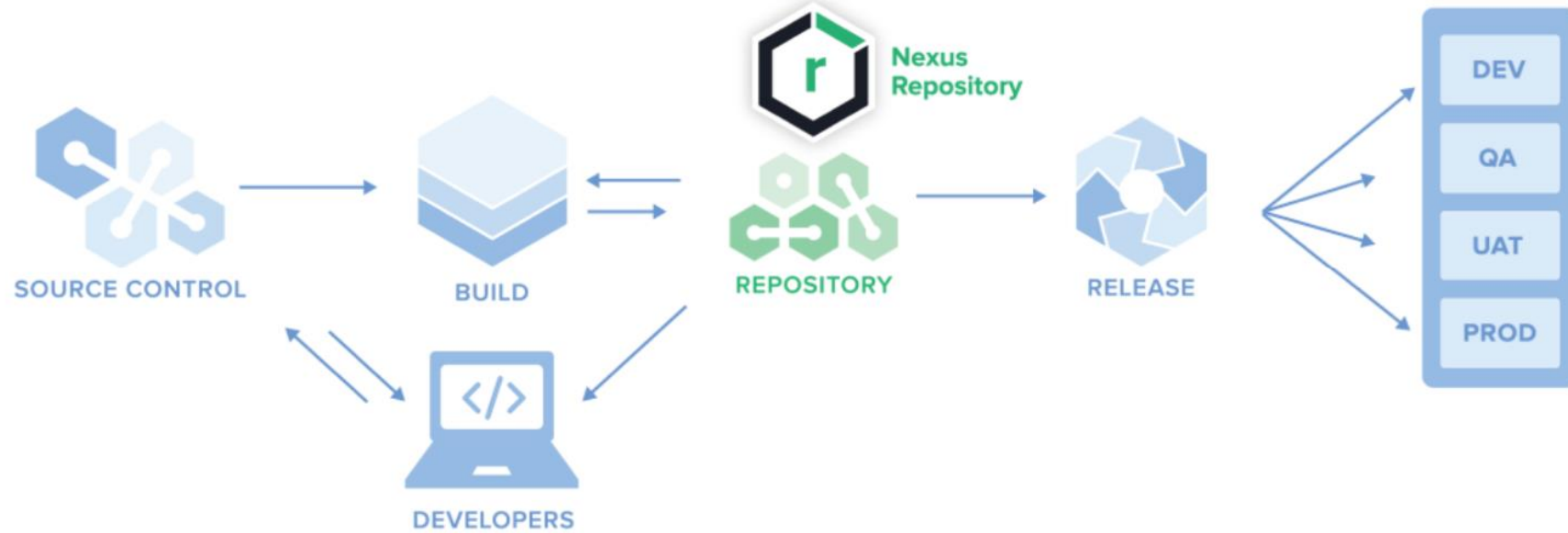


Source Code Library Management



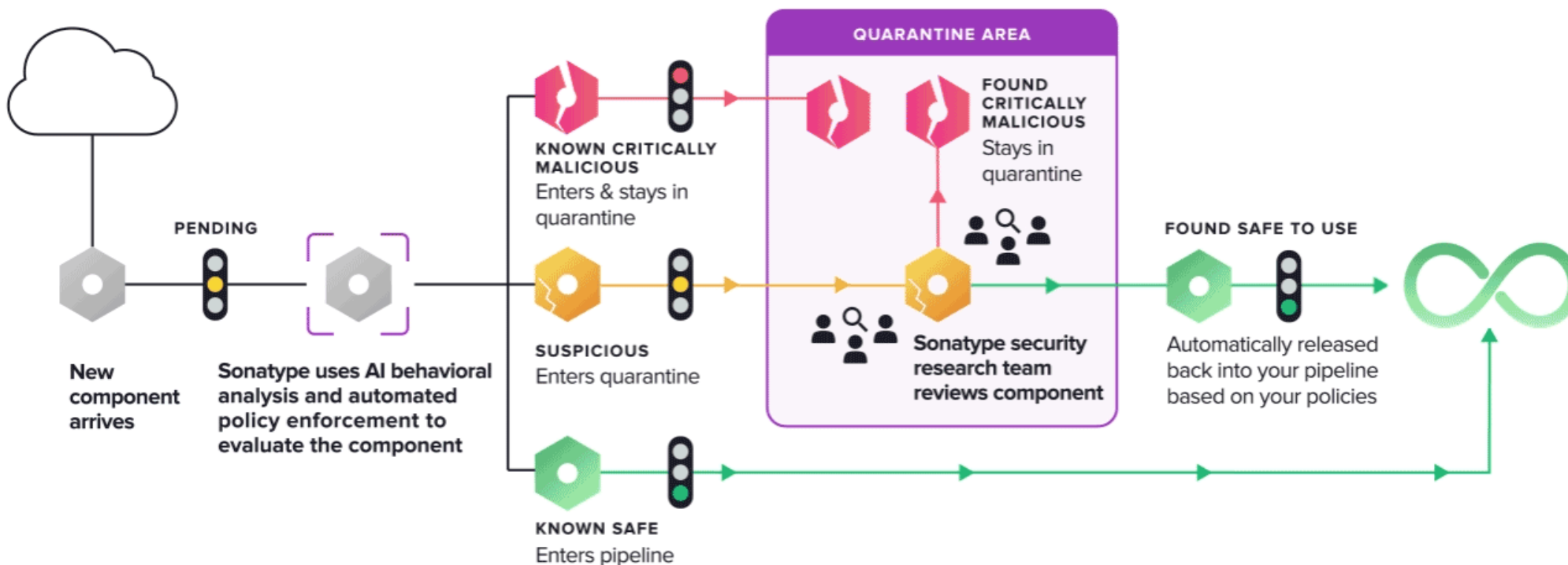


Sonatype Nexus Repository Pro



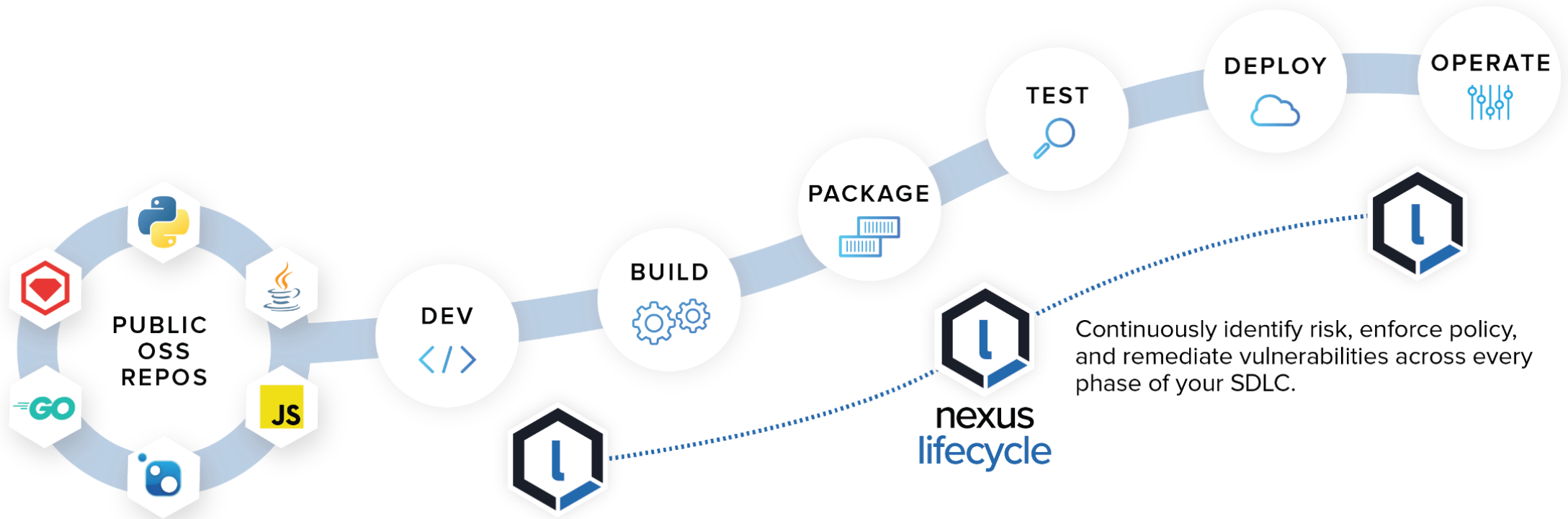


Nexus Firewall



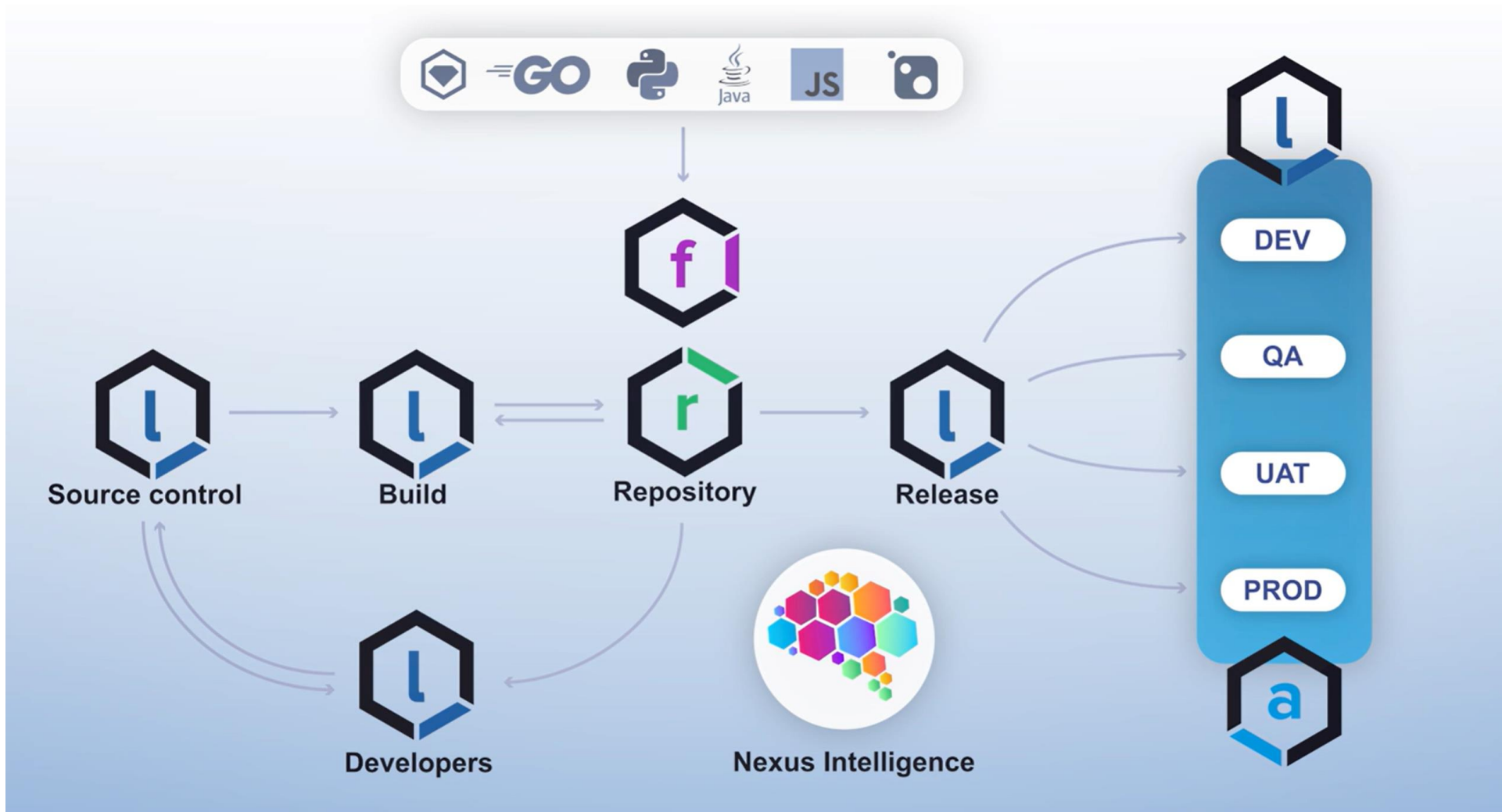


Sonatype Nexus Lifecycle





DevSecOps



Sonatype Feature





Complete Software Supply Chain Management

Speed up delivery of secure, quality applications early, everywhere, and at scale.



PRECISE IDENTIFICATION

Accurately identify open source and code quality risk across all your dependencies.



CONTINUOUS ENFORCEMENT

Continuously monitor, customize, and enforce powerful policies at dev, build, and run-time.



AUTOMATED PROTECTION

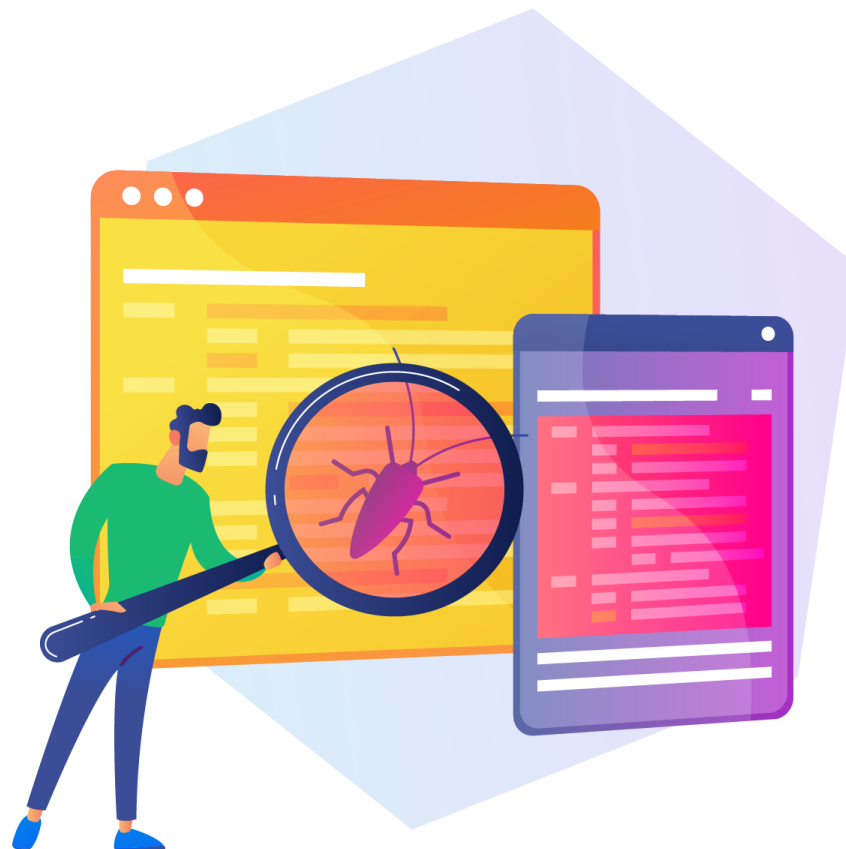
Automatically protect software supply chains against known and unknown attacks.





Discover risk the right way — with precise and accurate data.

- **Advanced Binary Fingerprinting** — 使用獨特的漏洞識別，消除開發人員的摩擦，減少誤報和漏報
- **Content Profile Insights(內容資料洞察)** — 通過減少花在修復安全、許可、架構和遷移風險上的時間來優化依賴庫的管理。
- **Deep Code Analysis(深度代碼分析)** — 了解關鍵性能和可靠性問題以及開發人員修復率，以衡量程式碼品質有效性。





Innovate faster without compromising quality or security



- **Advanced Policy Controls** — 根據應用程序數據和 SDLC 階段自動執行安全策略和法律合規義務。
- **Continuous Monitoring** — 在幾分鐘內檢測已佈署應用程序中新發現的漏洞。
- **Infrastructure as Code Rules** — 使開發人員能夠在開發早期即可發現並修復。





Protect the integrity of code, delivery pipelines, and operating environments.

- **Early Warning Detection** — 在使用 Sonatype 的 Nexus Intelligence 進入開發管道之前阻止和防止惡意行為和惡意軟件注入威脅。
- **Perimeter Control** — 通過自動策略實施自動防止依賴混淆攻擊進入存儲庫。
- **Behavioral Inspection** — 通過基於行為的安全策略的自動檢查，從構建到運行時保護容器。





Why Nexus?

- **#7 - Speedier Builds**
- **#6 - Saving the bandwidth of Central Maven Repositories**
- **#5 - Predictability and Stability**
- **#4 - Control and Auditing**
- **#3 - Ability to Deploy 3rd-party Artifacts**
- **#2 - Ability to Host Internal Repositories**
- **#1 - Ability to Host Public Repositories**

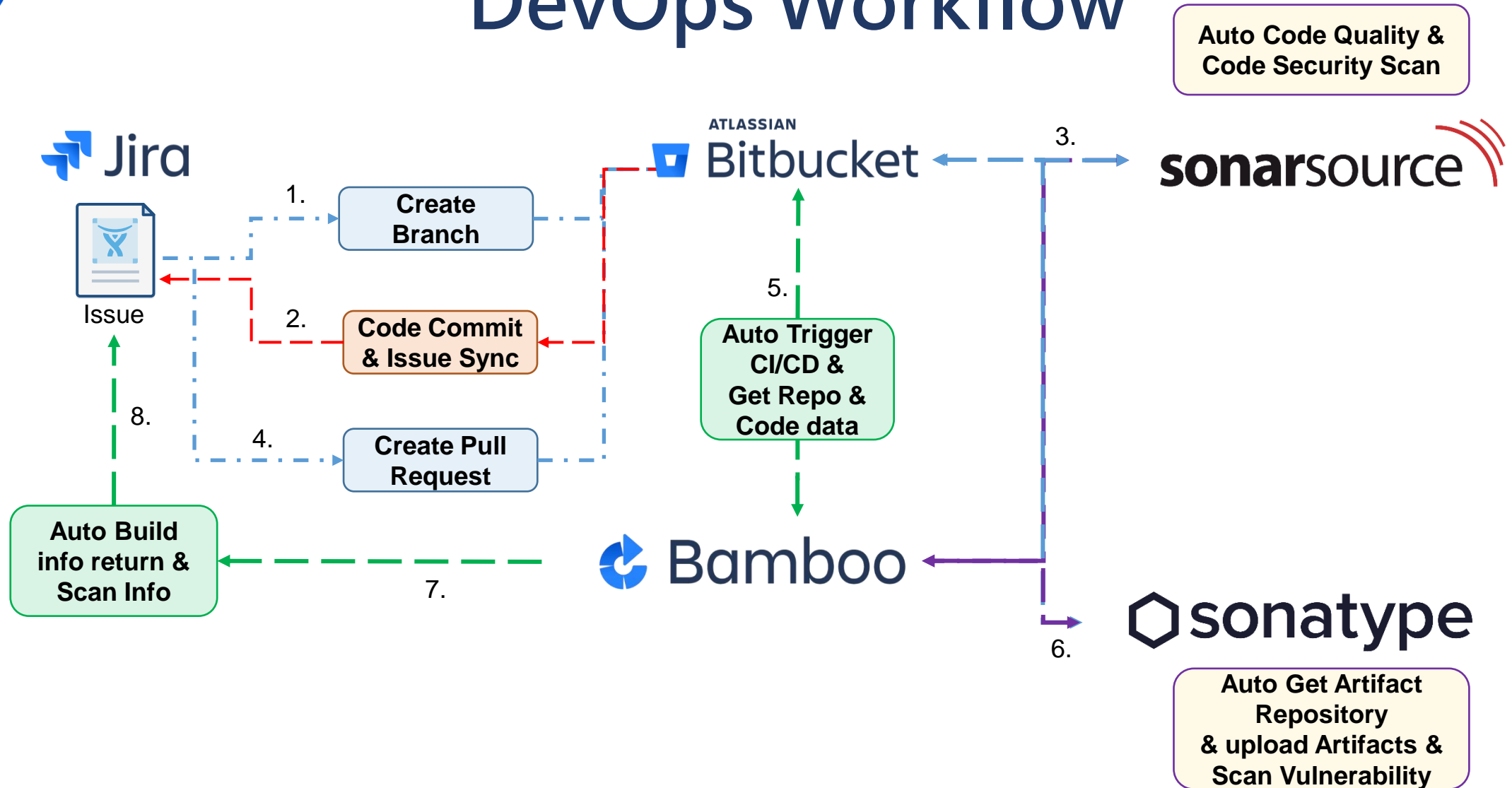


Nexus integration with CI/CD





DevOps Workflow

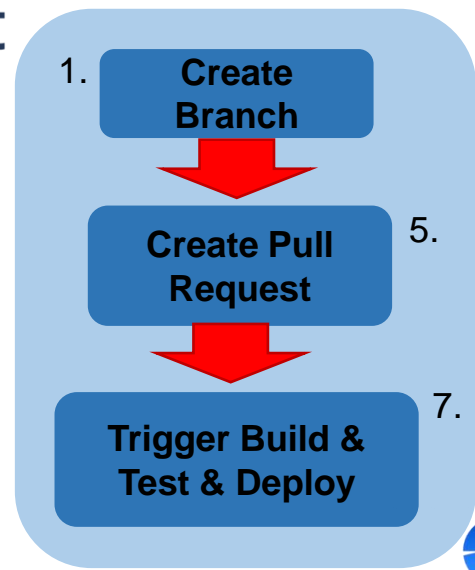




ATLASSIAN
Bitbucket



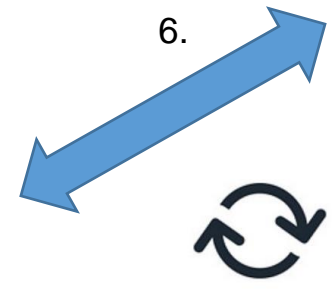
Google Cloud Platform



12. Gitlab Runner
deploy artifact
to GCP

Bamboo

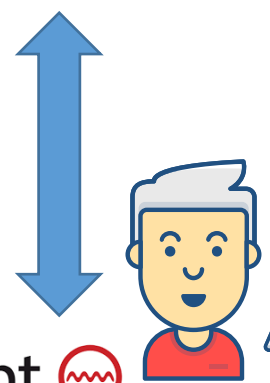
Pipeline trigger Code
Quality & Security
Scan



sonarqube

Code Quality & Code
Security Scan

2. Define Scan
Rule & Project



sonarlint

3. Auto Code Quality &
Code Security Scan
in Client

4. Push Code &
Code Review

10. Build Artifacts
& Scan
Vulnerability

sonatype

9. Artifacts Manager & Scan
Vulnerability

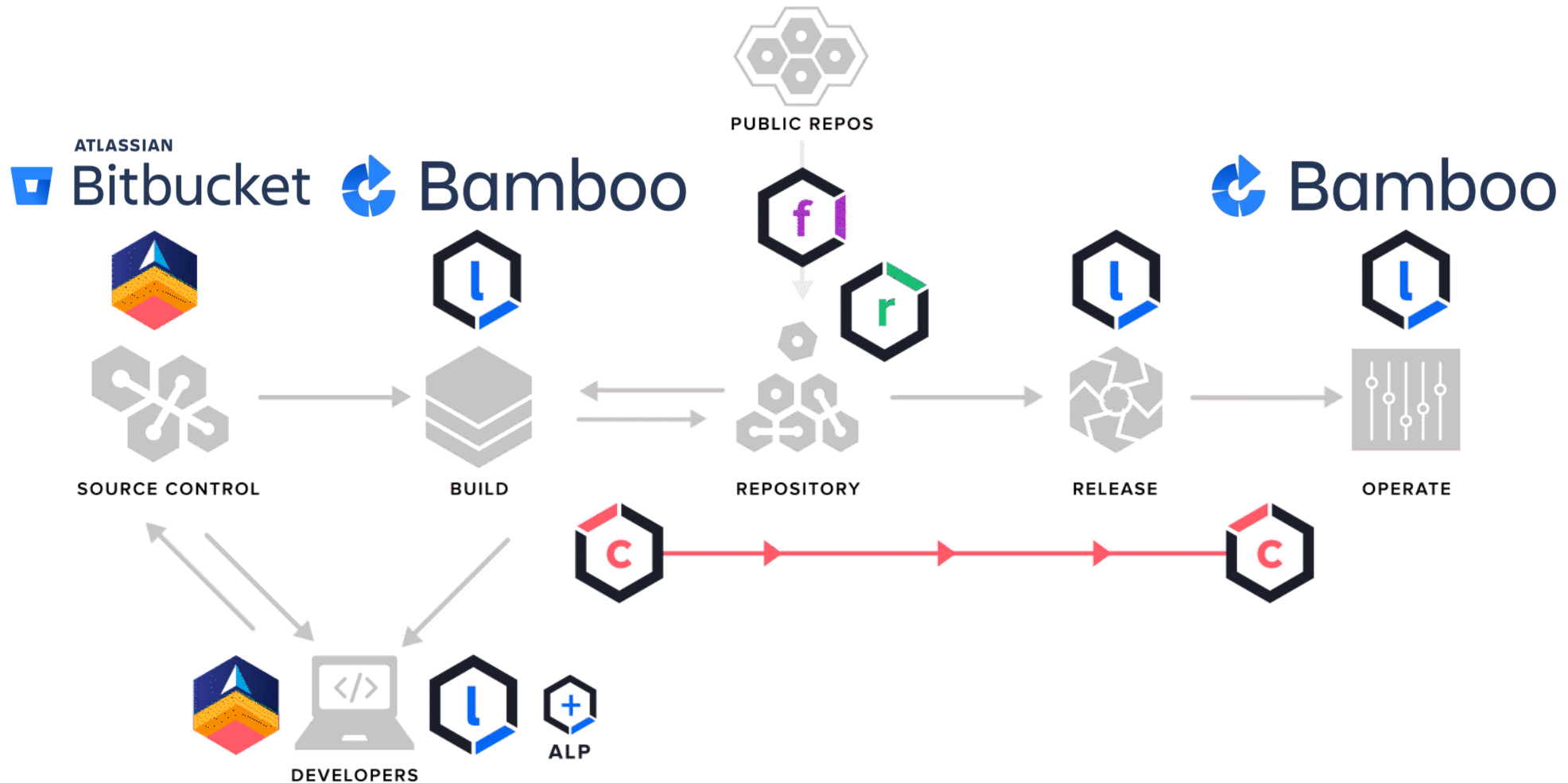
11. Nexus IQ CLI
Docker Container
Analysis

8. Get OSS
Scan
Vulnerability





Sonatype Full Platform Workflow



實機展示



Sonatype Pricing





Nexus Platform

Self Hosted

Our Nexus platform automates software supply chain management, enabling development and security teams to collaborate to identify vulnerable and malicious open source early and at scale.

THE NEXUS PLATFORM INCLUDES:

✓ Lifecycle

Manage open source risk throughout the SDLC with actionable guidance for users.

Available Add Ons

- Container
- Advanced Legal Pack

✓ Repository Pro

Centralize binary and build artifacts across your software supply chain.

[Try Repo Pro for free.](#)

[Compare Versions](#)

✓ Firewall

Keep your applications safe from malicious open source components.

Protects Nexus Repository Pro and Artifactory.

<https://www.sonatype.com/products/pricing?hsLang=en-us>



Nexus version compare





Repository Oss vs Pros

<https://www.sonatype.com/products/repository-oss-vs-pro-features>

1. 支援Stage和Build佈署
2. SAML/SSO、企業LDAP整合
3. 提供儲存空間自由擴展與遷移零停機
4. Pro提供進階Repository健康檢查報告
5. 支援個別Repository搬移
6. 可支援佈署到npm和Docker
7. 彈性故障切換
8. 原廠支援和專門的客戶成功團隊



Technical support & training





Technical support & training

原廠技術支援

項目	時間
Q&A by email or Sonatype support system	購買後一年.由Sonatype開出 License時間起計



What's Consultant Hours

Consultant Package



- ⚙️ 系統建置
- ⚙️ 管理
- ⚙️ 應用教學



界面功能與客
製化工程與教學
(AUI / SDK)



跨系統工程諮詢
與教學
(REST API / SDK)



IT方案諮詢與
工程



友環企業專業的顧問輔導

01

人 WHO?

負責維運單位/人員:IT
負責系統設定與管理:SA

02

事 WHAT?

第一階段導入的專案或單位

03

時 WHEN?

規劃各階段導入時間表與計畫大綱





Q&A





Thank you!

www.linktech.com.tw